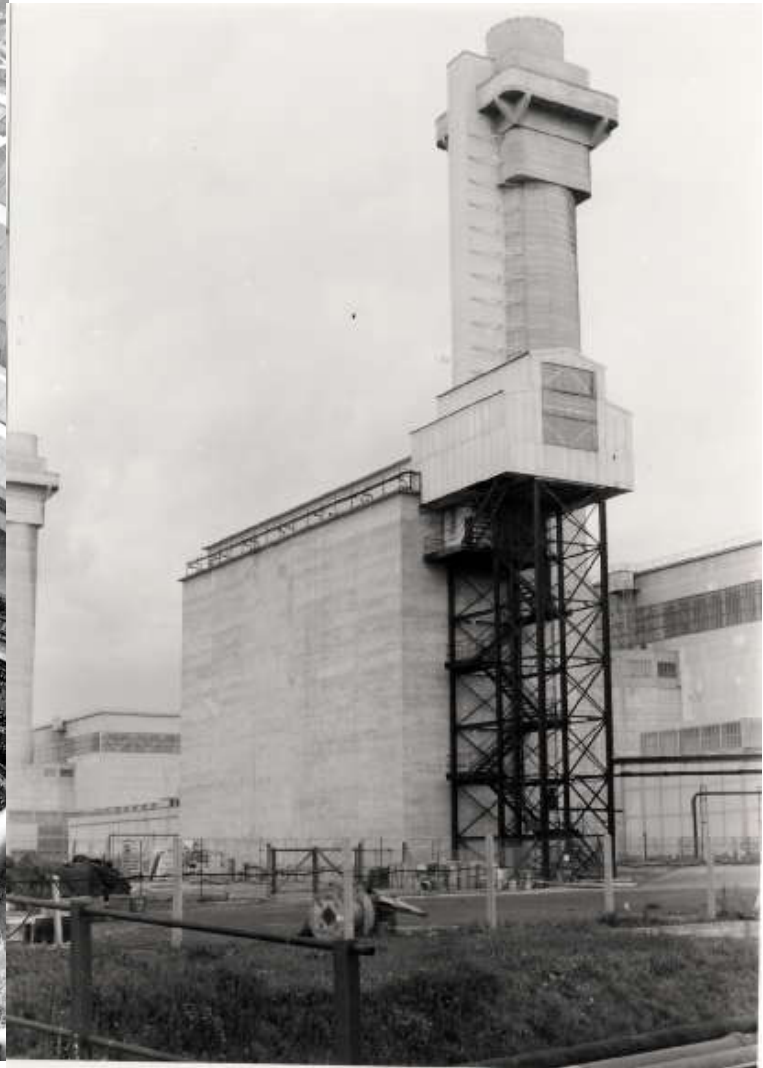
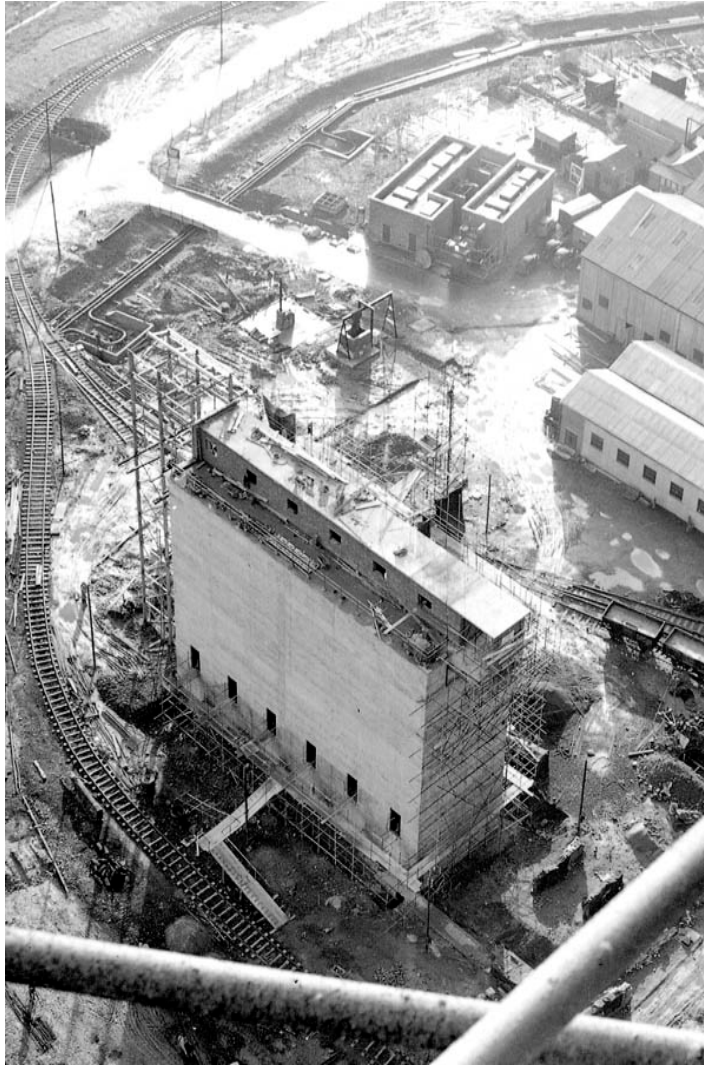


Unlocking the Vault – Decommissioning at PFCS Sellafield

A large iceberg floats in a deep blue ocean. The tip of the iceberg, which is visible above the water, is jagged and white. The much larger part of the iceberg is submerged below the water line, appearing dark blue and textured. This visual metaphor represents the 'vault' mentioned in the title, suggesting that the decommissioning project is uncovering a large, hidden volume of work or challenges.

Derek Carlisle,
PFCS Head of Projects,
Sellafield Ltd

Pile Fuel Cladding Silo



PFCS



Ready to Retrieve – the tip of the Iceberg



First clean and stabilise



Building a Foundation



1950's



2010's

The Big Numbers

2013:
£559m 

New Goal / Vision

Early Retrievals

Begin risk reduction as early as practically possible using the principles of Lead and Learn in areas with significant uncertainty

Lead and Learn

- Remove uncertainty and provide predictability to future retrieval campaigns
- Areas of uncertainty require simple, flexible solutions that do not preclude adapting to new information

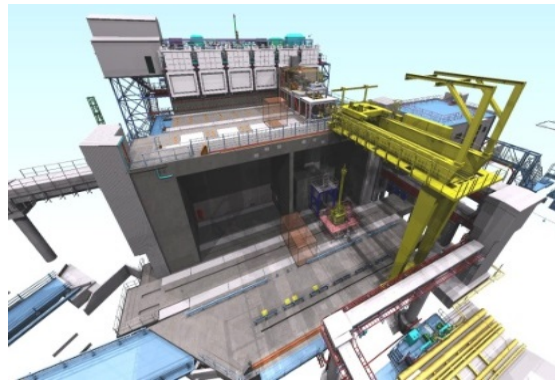
Achieved through

- Collaboration
- Innovation
- Local Supply Chain Integration

Pile Fuel Cladding Silo Acceleration



June 2016: UK Govt approval of 'lead and learn' early retrievals approach



Total programme cost:

£905m



£662m

Start of retrievals

2019

Further acceleration
opportunity for retrievals

2020

Previous forecast
start of retrievals

2022

Original forecasted start
of retrievals in PP14



Sellafield Ltd

How was collaboration established?

Before

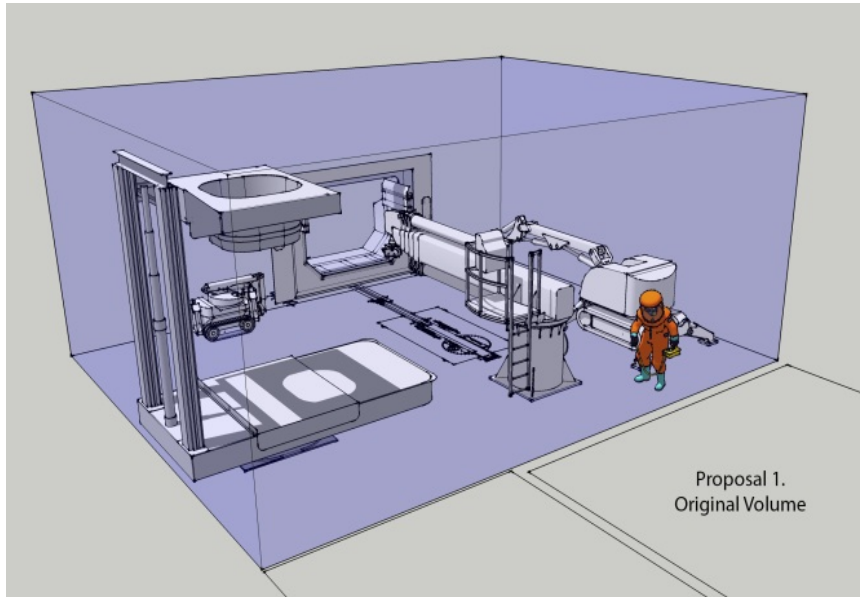
Large, complex, with
layers of man
marking & double
handling of
deliverables



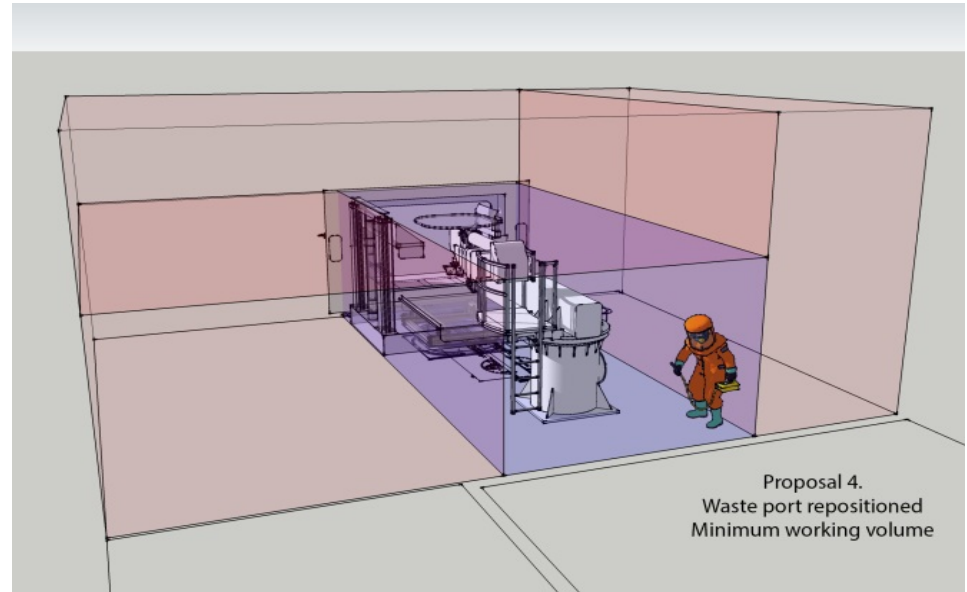
After

Simplified, integrated,
single delivery
focussed team

Innovation and Fit For Purpose



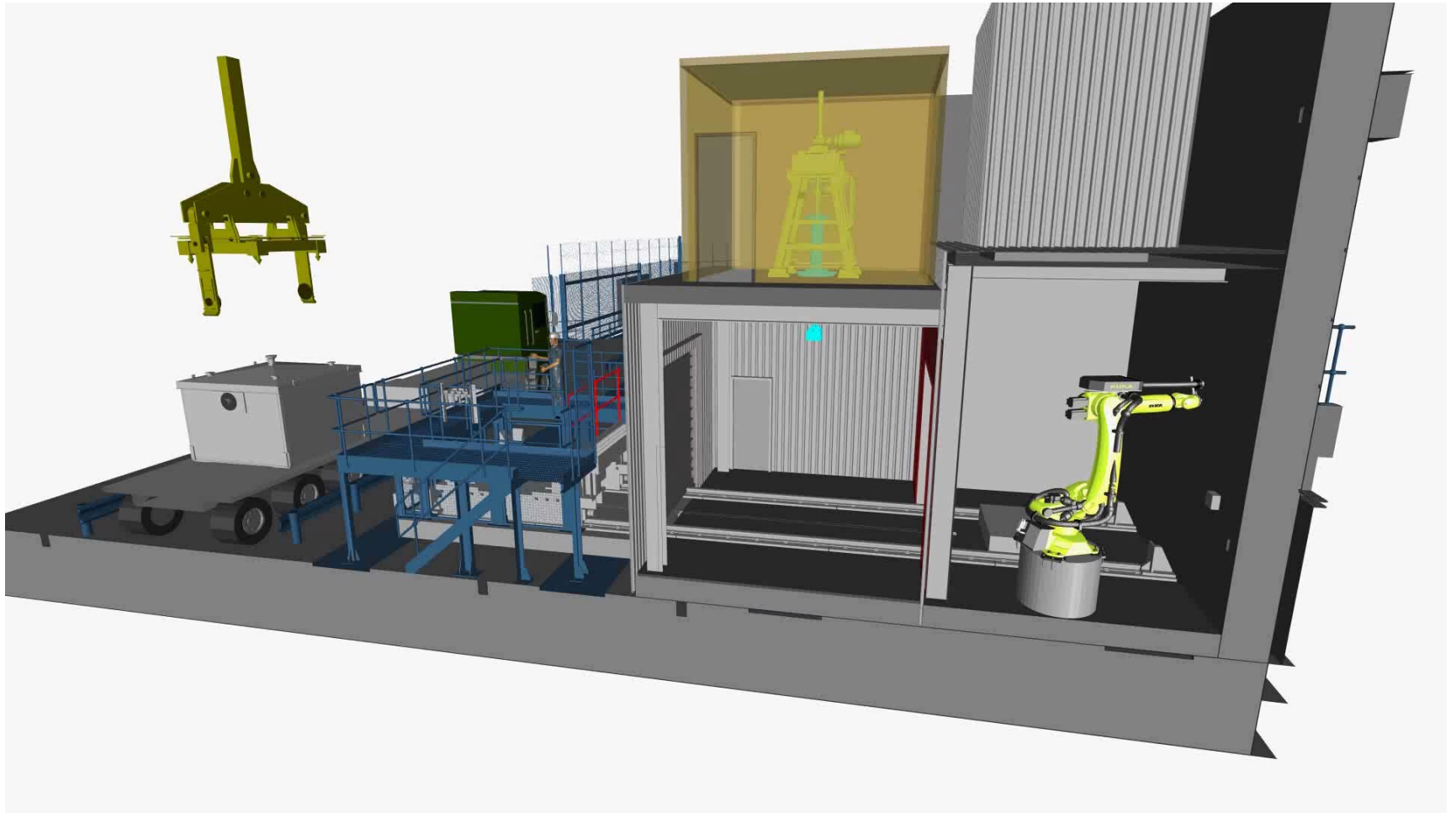
(535m³)



(109 m³)



PFCS Retrievals Process



Local Supply Chain Integration

Aim – Establishing a collaborative relationship with a wide range of local suppliers

Benefits

- Needs and Constraints understood
- Informed technology scanning
- Easy access to plant to confirm viability
- Geographically easier to get together
- Local test rigs and training
- Local support during operations

Deflector plate removal



Deflector plate removal



Silo Door Installation



Silo Door Installation





Retrievals Access Penetration



Sellafield Ltd

Retrievals Access Penetration





Rosyth Manufacture



Unit B – South Substructure nearing completion



Unit B – Services Module nearing completion

Outcomes – Testing & Commissioning



Retrieval Equipment Installation



Waste Container Handling Area
Building



Installation of Kuka robot onto its pedestal

Retrieval Equipment Installation



Waste Container Transfer Area Module Installation

Outcomes – Ready to Retrieve!



Questions?

